

T225 Cell Culture Flask

When conducting cell-based experiments and assays, life science researchers often need to obtain a large number of cells and produce recombinant proteins, antibodies and viral vectors from a large number of cells. T225 cell culture flask provides a more simple and practical method for culturing a large number of cells. Non-Treated surface suitable for suspension cell culture; TC Treated polystyrene surface has good hydrophilicity, which is suitable for the adhesion and extension of common cells; CellATTACH® super-hydrophilic treated surface is an enhanced surface, which can improve the adhesion and growth of fastidious cells.

Type of Cap: Plug Seal Cap Vent Cap

Material:

Bottle: Polystyrene (PS);

Bottle Cap: High-Density Polyethylene (HDPE);

Filter Membrane: Polytetrafluoroethylene (PTFE).

All of them conform to the requirements of USP Class VI.

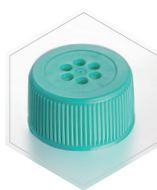
Features

- ◆ Various culture surfaces can meet different culture needs
- ◆ Low appearance design supports folding, saving incubator space
- ◆ The frosted area near bottleneck facilitates writing information.
- ◆ Volume scales on both sides.
- ◆ It has passed 100% on-line air tightness test strictly.
- ◆ Lot No. attached at the bottom of each flask and package bag facilitates quality traceability.
- ◆ Irradiation sterilization, SAL 10⁻⁶
- ◆ DNase/RNase-free, Non-pyrogenic, Non-cytotoxic



Plug Seal Cap

Plug seal polyethylene caps can be used in closed systems, providing a liquid and gas shear seal. But it can be simply unscrew the cap one quarter of a turn, this cap can also be used in open system.



Vent Cap

Vent polyethylene caps contain a 0.22µm hydrophobic filter to allow gas exchange and minimize risk of cross-contamination.

Cat. No.	Volume (mL)	Surface	Cell Culture Surface Area (cm ²)	Type of Cap	Recommended Working Capacity (mL)	Max. Working Volume (mL)	Sterile	Qty.Per Bag	Qty.Per Case
TCF001225	850	Non-Treated	/	Plug Seal	45-67.5	400	Y	5	25
TCF002225	850		/	Vent	45-67.5	400	Y	5	25
TCF011225	850	TC Treated	225	Plug Seal	45-67.5	400	Y	5	25
TCF012225	850		225	Vent	45-67.5	400	Y	5	25
CAF011225	850	CellATTACH® Treated	225	Plug Seal	45-67.5	400	Y	5	25
CAF012225	850		225	Vent	45-67.5	400	Y	5	25

*JET BIOFIL recommends 0.2 mL to 0.3 mL of medium per cm² of growth area.

