



At 37°C

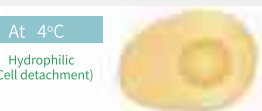
Hydrophobic
(Cell adhesion)



CellIDETACH™ Thermosensitive Culture Surface

At 4°C

Hydrophilic
(Cell detachment)



CellIDETACH™ Thermosensitive Culture Surface



CellIDETACH™

Thermosensitive Cell Culture Surface

TEST REPORT





The thermosensitive cell culture surface, with temperature-induced harvesting ability and good biocompatibility, after rigorous quality and performance testing, including the following:

1. Cell Culture Testing
2. Cooling off Test
3. Extractable substance Test
4. Hemolysis Test
5. Cytotoxicity Test
6. Endotoxin Test
7. DNase/RNase-free Test

All the above items meet the acceptance criteria and the test results are valid



Please contact your local distributor for the complete document